



[San Diego Visual Arts Network](#) presents [Little & Large](#)

**Over 90 Artists creating a Sculpture and related Jewelry for display at 41 Venues County Wide**

All venue details available on [www.SDVAN.net](http://www.SDVAN.net)  
by location, and alphabetically by venue/artist.

Watch for [Little & Large](#) near you from June through Dec, 2009

This promotion is inspired by the **Calder Jewelry** exhibition at **San Diego Museum of Art**  
beginning July 25, 2009 until Jan 3, 2010

More info: [info@sdvisualarts.net](mailto:info@sdvisualarts.net) 760.943.0148



[SDVAN.NET](http://SDVAN.NET)

<b>Introduction by Patricia Frischer</b>	<b>3 - 4</b>
<b>Little and Large by John P. Tafani, Edited by David Lewinson</b>	<b>5 -6</b>
<b>VENUES LISTED IN ALPHABETICAL ORDER</b>	<b>7</b>
<b>ARTISTS LISTED ALPHABETICALLY</b>	<b>8 - 10</b>
<b>VENUES LISTED BY LOCATION</b>	<b>11</b>
<b>Map, Venues and Artists</b>	
<b>Central San Diego,</b>	<b>12 - 18</b>
<b>Central San Diego North and South Park</b>	<b>19 - 21</b>
<b>East San Diego</b>	<b>22 - 25</b>
<b>South San Diego</b>	<b>26</b>
<b>North County Coastal La Jolla</b>	<b>27 - 29</b>
<b>North County Coastal</b>	<b>30 - 36</b>
<b>North County Inland</b>	<b>37 - 39</b>
<b>About SDVAN and Our Grateful Thanks</b>	<b>40 - 41</b>

"The dynamic and sensuous interplay between the materials and forms are symbiotic and essential to the overall impact and drama of a piece."

C. French



[SDVAN.NET](http://SDVAN.NET)

## Introductions by Patricia Frischer

"Jewelry is sculpture for the body. Sculpture is jewelry for the world."  
P. Frischer

3



[Patricia Frischer](#)

The San Diego Visual Arts Network in a joint collaboration of 41 venues from Fallbrook to Bonita has challenged almost 100 local artists, both sculptors and jewelers, to work in both mediums in homage to Alexander Calder. When I heard the announcement about **Calder Jewelry**, the light bulb went on almost immediately as I thought about how this artist had created his stunning sculptures but also made over 1800 pieces of jewelry. Why not ask local sculptors to make a piece of jewelry? Then naturally, we must give that same chance to local jewelers by asking them to create a sculpture. I had no idea this seemingly simple concept would be so embraced by the art community.

We have asked each artist (either a sculptor or a jeweler) to make both a work of sculpture and a piece of jewelry just like Alexander Calder made both jewelry and sculpture. We have asked each to write a few words about that relationship. We are giving artists the opportunity and challenge to work in another medium, if they are not already doing so. The artists are not partnered together...they all work independently and they show their two works side by side. Some artists have been asked to show a number of these combinations at their venues and a few are showing at more than one place.

As coordinator of the SDVAN I saw many immediate benefits for our organization. It is our first county wide promotion, thus giving us wider exposure than ever before. We made collaborations with a new set of volunteers, artists, art galleries, and museum shops. We also received masses of new listings on the site from those resources as well as on our mailing list. We are asking for a 5% voluntary donation for any work sold during the promotion to help raise funds for our future projects.



[SDVAN.NET](http://SDVAN.NET)

“Many artists are delighted to have found new venues for their work to help boost their careers and hopefully their pocketbooks” as stated by our La Jolla coordinator Lisa Van Herik. Some of the jewelers are being validated as artists as this is the first show for them in art galleries and not shops. The sculptors are getting a chance to create jewelry which might possibly have a better market than larger works during the current economic market. We have found that many sculptors are welcoming this opportunity to make smaller wearable works at this time when large pieces are more challenging to place. Also jewelers are embracing the idea of making larger works which don't need to be wearable; thereby helping them cross over and break down the boundaries between art and craft.

The venues are being exposed to new artists and by joining such a large collaboration are getting greater exposure and the possibility of a new audience. This is an opportunity to come together and present a united front and draw more attention to the visual arts. Besides the official launch at the Se Hotel, at least five major areas of town (El Cajon, North Park, Cedros Design District in Solana Beach, La Jolla and North County Inland) are able to feature these artists during their monthly Art Walks. Many are having private openings as well as giving up to three special evenings to celebrate and promote themselves and the artists. That makes over 50 opportunities to gather and network. SDVAN with its 3-4000 unique visitors a month and over one million hits a year gives tremendous coverage to these events.

I hope we are giving the art patrons who might be happy to buy a piece of jewelry a way to relate to sculpture and to expand their concepts of art. And for those feeling the pinch right now, hasn't artful jewelry always been reasonably affordable portable sculpture? One of the largest challenges for SDVAN is to try to create more art collectors in our region. This county-wide promotion will help art buyers find art close by and find it hard to resist these tempting displays.

I personally am very pleased about all the special works that have been created just for this promotion. I get so excited when I am in the proximity of good art. Plus, I love a good party with many individual venue receptions and at our group launch, everyone will be given a chance to Party with the Art Stars.

**Patricia Frischer** is a founding member and coordinator of the [San Diego Visual Arts Network](http://www.SanDiegoVisualArtsNetwork.com), Frischer has taken on the roles of gallerist, curator, writer, teacher, website coordinator and artist. Her many metamorphoses make it difficult to fit her into any of the usual art world categories. She is author of *The Artist and the Art of Marketing* and has lectured extensively on marketing for artists. She is a trainer of artists' agents, art dealers, consultant and collectors. Her own art work ([www.DrawsCrowd.com](http://www.DrawsCrowd.com)) has been shown internationally and her most recent one person show was at Oxford University and The Mesa College Art Gallery.



[SDVAN.NET](http://SDVAN.NET)

## **Little and Large by John P. Tafani**

Edited by [David Lewinson](#)

What does contemporary signature jewelry share with sculpture in addition to their three-dimensionality and their identity as unique products of a particular creator?

From small, high-precision rings worn on the fingers to outdoor forms that can be seen in their entirety only from the air, scaling up and scaling down has been part of art movements since the post World War II era, and especially since the 1960s and Pop Art.

Why do similar forms at different scales produce different feelings and attract different audiences? Does size change our perception of form and space? Are beauty and art linked in our consciousness in such a way that most people will spend large amounts of money to buy and wear jewelry while far fewer will purchase even modest sized sculpture, let alone consider expanding their walls to accommodate a larger piece. Is the cost and nature of the metals - from gold and platinum to COR-TEN steel -- the reason for the popular success of jewelry's small works? Why is small so beautiful? Why is large so powerful?

Sculpture offers no equivalent to jewelry's ability to convey social information such as what's conveyed by a wedding band or an alumni ring. Yet large pieces by Henry Moore, Jim Dine, and Barry Flanagan can play a similar role at the corporate level.

Beyond the respective various points of view of the wearer/admirer, it's noteworthy to realize that most if not all of the famous artists of both the 19th and 20th centuries who worked with metals produced both little and large works; sculptures to wear and monuments for the city and landscape. They shared an architectural approach to the shaping of materials, a recognition of the most ancient traditions of craft, and an awareness of historical forms combined with memories of chewed paper and macaroni necklaces made at the age of 4 to celebrate family love.



[SDVAN.NET](http://SDVAN.NET)

Perception by the viewer is dramatically changed by size. The large creates a distance and thus enforces a distanced relationship between humankind and its surrounding environment. In contrast, the little invites the viewer to grasp the jewelry in hand in what is likely a spontaneous desire to get closer to the skin of the of the beloved bearer. In his ode to Jeanne Duval, Baudelaire captures this sensibility, writing "the dearest was naked and smiled with ease, she had only kept her sounding laces." From Alexander Calder to Bernar Venet, from George Braque to Max Ernest and Dorothea Tanning, at least four generations of artists have created jewelry, mostly for the sole pleasure of their loved ones. But sometimes the works are constructed for their art dealer or a museum curator, or simply as an opportunity to pursue creative teamwork with talented gold and silversmiths.

Some creations are 'just' changes in scale and material while others take old and out of fashion jewelry and transform it with the modern sculptor's virtuosity and sense of style.

Little and Large gathers the vision and skills of many artists and the diversity of many materials, displaying them under the California sun as it shines on natures' and the human body's landscape. It is thus a unique opportunity to view and appreciate the creativity of those artists who have chosen to live and work in such magnificent surroundings. Moreover, the exhibition is an invitation to people of all ages to question the relationship of human size to that of our complex environment.

John P. Tafani, a collector of and an editor/writer about 3D art and CEO of Apcis Cro in France. He is director and chief curator of [Art O Centre Sculpture Trail and Galleries](#).

[David Lewinson](#) a San Diego based reviewer and critic who provides expert writing and editing services to artists and galleries nationwide.

"I believe partnerships between form and materials elicit strong visual messages that seduce the viewer."  
S. Hirsch



[SDVAN.NET](http://SDVAN.NET)

## VENUES LISTED IN ALPHABETICAL ORDER

<a href="#"><u>Adorn Gallery</u></a>	<a href="#"><u>Fusionglass Co</u></a>	<a href="#"><u>Planet Rooth</u></a>
<a href="#"><u>Andrews Gallery</u></a>	<a href="#"><u>Galeria JAN</u></a>	<a href="#"><u>San Diego Art Department</u></a>
<a href="#"><u>Art Expressions Gallery</u></a>	<a href="#"><u>Gemological Institute Of America</u></a>	<a href="#"><u>San Diego Museum of Art Gift Store</u></a>
<a href="#"><u>Bonita Museum</u></a>	<a href="#"><u>Jett Gallery</u></a>	<a href="#"><u>Silver Creek Fine Art</u></a>
<a href="#"><u>Bread on Market</u></a>	<a href="#"><u>Hallmark Fine Art Gallery</u></a>	<a href="#"><u>Solana Beach City Hall Gallery</u></a>
<a href="#"><u>Cirello Gallery</u></a>	<a href="#"><u>Lynne Merchant</u></a>	<a href="#"><u>Sophie's Art Gallery</u></a>
<a href="#"><u>Citizen Video</u></a>	<a href="#"><u>Mixture</u></a>	<a href="#"><u>St. Clair Gallery</u></a>
<a href="#"><u>Colosseum Fine Arts</u></a>	<a href="#"><u>Madison Gallery</u></a>	<a href="#"><u>Taboo</u></a>
<a href="#"><u>Contemporary Fine Arts Gallery</u></a>	<a href="#"><u>Noel-Baza Fine Art</u></a>	<a href="#"><u>Timmons</u></a>
<a href="#"><u>Devices Gallery</u></a>	<a href="#"><u>Oceanside Museum of Art, Gift Store</u></a>	<a href="#"><u>Trios</u></a>
<a href="#"><u>Distinction Gallery</u></a>	<a href="#"><u>Olaf Wieghorst Museum</u></a>	<a href="#"><u>Velo Cult</u></a>
<a href="#"><u>EAP/ Escondido Municipal Gallery</u></a>	<a href="#"><u>Ordover Gallery</u></a>	<a href="#"><u>White Sage Gallery</u></a>
<a href="#"><u>Fallbrook Art Center</u></a>	<a href="#"><u>Par Jewelry</u></a>	<a href="#"><u>101 Art and Soul</u></a>
<a href="#"><u>Front Porch Gallery</u></a>	<a href="#"><u>Pigment</u></a>	

"These pieces all start from a circle. The basic of basic forms. By making 2 spherical shapes and connecting them I create a pod. By taking that pod, and slicing it at an angle, I create an ellipse. By taking that same pod, and cutting it in half, I create 2 half circles, that then can each become a finished piece. Everything in life can be broken down to the simplest of simple forms."

L. S. Mandel



[SDVAN.NET](http://SDVAN.NET)

## ARTISTS LISTED ALPHABETICALLY

Archibald, Alexis  
Austin, Chris  
Barrera, Hugo Heredia  
Bell, Courtney  
Berkowitz, Susan  
Bledsoe, Denise  
blox  
Bociek, Neal  
Bonaimo, Denise  
Boyd, Ron  
Brotherton, Greg  
Butz-Brown, Mirjam  
Castrejon, Carlos  
Childs, Ashley Agadez  
Cirello, Matthew  
Cohen, Garry  
Conty, Angela  
Cornejo, Taylor  
d. goth  
Da Pra, Linda  
Darin, Jane  
de Watteville, Irene  
de Wit, Lea  
des Rosiers, Mireille  
Devine, Matt  
Ditore, Dick  
Donald, Mary  
Ebanks, Elon  
Eisemann, Elizabeth Huller  
Fernandes, Paul  
Fought, Cyndy  
Francis, Deborah  
French, Craig  
Fresh Ginga

Giacchina, Polly Jacobs  
Guerra, Carolyn  
Guttin, Becky  
Hansen, Johanna  
Hansen, Kristin  
Hart, Alexandra  
Hirsch, Susan  
Hubbell, James  
Hulet, Jan  
Ivey, Lindy  
Keely, Richard  
Keltner, Diane  
Kermott, Jim  
La Porte, Cherrie  
Lanzl, Catherine  
Larraine, Rachel  
Lavender, Benjamin  
Leong, Jackie  
Lesley, William  
Lizarrga, Charlie  
Lombrozo, Viviana  
Lorenz, Michael  
Magboo, Tara  
Mandel, Lisa Slovis  
Margerum, Marcus  
Marosz, Tom  
Merchant, Lynn  
Miller, Casey  
Mingo and Asho  
Mitchell, Kathleen  
Moons, Theresa  
Morris, Wendy  
Neal, Angela  
Osborn, Susan

Perez-Garcia, Corrine  
Perhacs, Les  
Perry, Wendell  
Provence, Ross  
Rantanen, Marlene  
Riggs, Vicki  
Rodriguez, Carol Beth  
Rooth, Gustaf  
Rosenberg, Sander  
Salgato, Rudy  
Sandlin, Joann  
Solan, Debbie  
Steorts, Jeffrey  
Steorts, Larry  
Streed, Jill  
Strell, Lia  
Tegebo, Hans  
Vaiasuso, Joey  
Van Herik, Lisa  
Vaughn, Kaarin  
Verhees, Robert  
Wildesmith, Sidney  
Wilson, Michelle  
Wilson, Thomine  
Wolf, Anne  
Zarrabi, Kamyar





[SDVAN.NET](http://SDVAN.NET)

## ARTISTS LISTED ALPHABETICALLY

Artist	Venue	Location
<a href="#">Archibald, Alexis</a>	<a href="#">San Diego Art Department</a>	North Park
<b>Austin, Chris</b>	<a href="#">Mixture</a>	Central San Diego
<b>Bell, Courtney</b>	<a href="#">Sophie's Art Gallery</a>	East San Diego
<a href="#">Berkowitz, Susan</a>	<a href="#">Colosseum Fine Art</a>	Central San Diego
<b>Bledsoe, Denise</b>	<a href="#">Distinction Gallery</a>	North County Inland
<a href="#">blox</a>	<a href="#">Mixture</a>	Central San Diego
<a href="#">Bociek, Neal</a>	<a href="#">Gemological Institute Of America</a>	North County Coastal
<a href="#">Bonaimo, Denise</a>	<a href="#">San Diego Art Department</a>	North Park
<a href="#">Bonaimo, Denise</a>	<a href="#">Bonita Museum</a>	South San Diego
<b>Boyd, Ron</b>	<a href="#">Taboo</a>	Central San Diego
<a href="#">Brotherton, Greg</a>	<a href="#">Device Gallery</a>	Central San Diego
<a href="#">Butz-Brown, Mirjam</a>	<a href="#">Adorn Gallery</a>	Central San Diego
<a href="#">Butz-Brown, Mirjam</a>	<a href="#">Gemological Institute Of America</a>	North County Coastal
<a href="#">Castrejon, Carlos</a>	<a href="#">Silver Creek Fine Art</a>	East San Diego
<a href="#">Childs, Ashley Agadez</a>	<a href="#">Solana Beach City Hall Gallery</a>	North County Coastal
<a href="#">Cirello, Matthew</a>	<a href="#">Cirello Gallery</a>	Central San Diego North Park
<a href="#">Cohen, Garry</a>	<a href="#">Colosseum Fine Art</a>	Central San Diego
<a href="#">Conty, Angela</a>	<a href="#">Adorn Gallery</a>	Central San Diego
<a href="#">Cornejo, Taylor</a>	<a href="#">Cirello Gallery</a>	North Park
<a href="#">d. goth</a>	<a href="#">Trios</a>	North County Coastal
<b>Da Pra, Linda</b>	<a href="#">Trios</a>	North County Coastal
<a href="#">Darin, Jane</a>	<a href="#">St. Clair Gallery</a>	East San Diego
<a href="#">de Watteville, Irene</a>	<a href="#">Lynne Merchant</a>	North County Coastal
<a href="#">de Wit, Lea</a>	<a href="#">Mixture</a>	Central San Diego
<a href="#">des Rosiers, Mireille</a>	<a href="#">101 Art and Soul</a>	North County Coastal
<a href="#">Devine, Matt</a>	<a href="#">Mixture</a>	Central San Diego

<a href="#">Ditore, Dick</a>	<a href="#">Ordovery Gallery</a>	North County Coastal
<a href="#">Donald, Mary</a>	<a href="#">Pigment</a>	North Park
<a href="#">Elon Ebanks</a>	<a href="#">Olaf Wieghorst Museum</a>	East San Diego
<a href="#">Elon Ebanks</a>	<a href="#">Solana Beach City Hall Gallery</a>	North County Coastal
<a href="#">Fernandes, Paul</a>	<a href="#">Fusionglass Co</a>	East San Diego
<b>Fought, Cyndy</b>	<a href="#">Sophie's Art Gallery</a>	East San Diego
<a href="#">Francis, Deborah</a>	<a href="#">Colosseum Fine Art</a>	Central San Diego
<a href="#">French, Craig</a>	<a href="#">Contemporary Fine Arts Gallery</a>	La Jolla
<a href="#">Fresh Ginga</a>	<a href="#">Par Jewelry</a>	North County Inland
<a href="#">Giacchina, Polly Jacobs</a>	<a href="#">Oceanside Musuem of Art, Gift Store</a>	North County Coastal
<a href="#">Guerra, Carolyn</a>	<a href="#">Madison Gallery</a>	La Jolla
<a href="#">Guttin, Becky</a>	<a href="#">San Diego Museum of Art Gift Store</a>	Central San Diego
<a href="#">Guttin, Becky</a>	<a href="#">Galeria JAN</a>	La Jolla
<b>Hansen, Johanna</b>	<a href="#">Trios</a>	North County Coastal
<b>Hansen, Kristin</b>	<a href="#">Sophie's Art Gallery</a>	East San Diego
<a href="#">Hart, Alexandra</a>	<a href="#">Adorn Gallery</a>	Central San Diego
<a href="#">Hart, Alexandra</a>	<a href="#">Contemporary Fine Arts Gallery</a>	La Jolla
<a href="#">Hart, Alexandra</a>	<a href="#">Gemological Institute Of America</a>	North County Coastal
<b>Heredia Barrera, Hugo</b>	<a href="#">Mixture</a>	Central San Diego
<a href="#">Hirsch, Susan</a>	<a href="#">Contemporary Fine Art Gallery</a>	La Jolla
<a href="#">Hirsch, Susan</a>	<a href="#">Trios</a>	North County Coastal
<a href="#">Hubbell, James</a>	<a href="#">Oceanside Musuem of Art, Gift Store</a>	North County Coastal
<b>Hulet, Jan</b>	<a href="#">Sophie's Art Gallery</a>	East San Diego
<a href="#">Huller Eisemann, Elizabeth</a>	<a href="#">EAP/ Escondido Municpal Gallery</a>	North County Inland
<a href="#">Ivey, Lindy</a>	<a href="#">Citizen Video</a>	North Park
<b>Keely, Richard</b>	<a href="#">Velo Cult</a>	South Park



SDVAN.NET

## ARTISTS LISTED ALPHABETICALLY

Artist	Venue	Location
<a href="#">Keltner, Diane</a>	<a href="#">White Sage Gallery</a>	East San Diego
<a href="#">Kermott, Jim</a>	<a href="#">Silver Creek Fine Art</a>	East San Diego
<a href="#">La Porte, Cherrie</a>	<a href="#">Colosseum Fine Art</a>	Central San Diego
<a href="#">Lanzl, Catherine</a>	<a href="#">Distinction Gallery</a>	North County Inland
<a href="#">Larraine, Rachel</a>	<a href="#">Mixture</a>	Central San Diego
<a href="#">Lavender, Benjamin</a>	<a href="#">Planet Rooth</a>	North Park
<a href="#">Leong, Jackie</a>	<a href="#">Sophie's Art Gallery</a>	East San Diego
<a href="#">Leslie, William</a>	<a href="#">Mixture</a>	Central San Diego
<a href="#">Lizarrga, Charlie</a>	<a href="#">Sophie's Art Gallery</a>	East San Diego
<a href="#">Lombrozo, Viviana</a>	<a href="#">Art Expressions Gallery</a>	Central San Diego
<a href="#">Lorenz, Michael</a>	<a href="#">Sophie's Art Gallery</a>	East San Diego
<a href="#">Magboo, Tara</a>	<a href="#">Colosseum Fine Art</a>	Central San Diego
<a href="#">Mandel, Lisa Slovis</a>	<a href="#">Contemporary Fine Arts Gallery</a>	La Jolla
<a href="#">Margerum, Marcus</a>	<a href="#">Sophie's Art Gallery</a>	East San Diego
<a href="#">Marosz, Tom</a>	<a href="#">Hallmark Fine Art Gallery</a>	La Jolla
<a href="#">Merchant, Lynne</a>	<a href="#">Lynne Merchant</a>	North County Coastal
<a href="#">Miller, Casey</a>	<a href="#">Taboo</a>	Central San Diego
<a href="#">Mingo and Asho</a>	<a href="#">Fallbrook Art Center</a>	North County Inland
<a href="#">Mitchell, Kathleen</a>	<a href="#">Colosseum Fine Art</a>	Central San Diego
<a href="#">Moons, Theresa</a>	<a href="#">Sophie's Art Gallery</a>	East San Diego
<a href="#">Morris, Wendy</a>	<a href="#">Sophie's Art Gallery</a>	East San Diego
<a href="#">Neal, Angela</a>	<a href="#">Sophie's Art Gallery</a>	East San Diego
<a href="#">Osborn, Susan</a>	<a href="#">Bonita Museum</a>	South San Diego
<a href="#">Perez-Garcia, Corrine</a>	<a href="#">Contemporary Fine Arts Gallery</a>	La Jolla
<a href="#">Perez-Garcia, Corrine</a>	<a href="#">Gemological Institute Of America</a>	North County Coastal
<a href="#">Perhacs, Les</a>	<a href="#">Contemporary Fine Arts Gallery</a>	La Jolla
<a href="#">Perhacs, Les</a>	<a href="#">Fallbrook Art Center</a>	North County Inland

<a href="#">Perry, Wendell</a>	<a href="#">Gemological Institute Of America</a>	North County Coastal
<a href="#">Perry, Wendell</a>	<a href="#">Fallbrook Art Center</a>	North County Inland
<a href="#">Provence, Ross</a>	<a href="#">Olaf Wieghorst Museum</a>	East San Diego
<a href="#">Rantanen, Marlene</a>	<a href="#">Fallbrook Art Center</a>	North County Inland
<a href="#">Riggs, Vicki</a>	<a href="#">Adorn Gallery</a>	Central San Diego
<a href="#">Riggs, Vicki</a>	<a href="#">Gemological Institute Of America</a>	North County Coastal
<a href="#">Rodriguez, Carol Beth</a>	<a href="#">Solana Beach City Hall Gallery</a>	North County Coastal
<a href="#">Rooth, Gustaf</a>	<a href="#">Planet Rooth</a>	Central San Diego North Park
<a href="#">Rosenberg, Sander</a>	<a href="#">Andrews Gallery</a>	North County Coastal
<a href="#">Salgato, Rudy</a>	<a href="#">Sophie's Art Gallery</a>	East San Diego
<a href="#">Sandlin, Joann</a>	<a href="#">St. Clair Gallery</a>	East San Diego
<a href="#">Solan, Debbie</a>	<a href="#">Timmons</a>	North County Coastal
<a href="#">Solan, Debbie</a>	<a href="#">Fusionglass Co</a>	East San Diego
<a href="#">Steorts, Jeffrey</a>	<a href="#">Bonita Museum</a>	South San Diego
<a href="#">Steorts, Larry</a>	<a href="#">Bonita Museum</a>	South San Diego
<a href="#">Streed, Jill</a>	<a href="#">St. Clair Gallery</a>	East San Diego
<a href="#">Strell, Lia</a>	<a href="#">Front Porch Gallery</a>	North County Coastal
<a href="#">Tegebo, Hans</a>	<a href="#">Jett Gallery</a>	Central San Diego
<a href="#">Vaiasuso, Joey</a>	<a href="#">Jett Gallery</a>	Central San Diego
<a href="#">Van Herik, Lisa</a>	<a href="#">Colosseum</a>	Central San Diego
<a href="#">Verhees, Robert</a>	<a href="#">Mixture</a>	Central San Diego
<a href="#">Wildsmith, Sidney</a>	<a href="#">Olaf Wieghorst Museum</a>	East San Diego
<a href="#">Wilson, Michelle</a>	<a href="#">Jett Gallery</a>	Central San Diego
<a href="#">Wilson, Thomine</a>	<a href="#">Bread on Market</a>	Central San Diego
<a href="#">Wolf, Anne,</a>	<a href="#">Noel-Baza Fine Art</a>	Central San Diego
<a href="#">Zarrabi, Kamyar</a>	<a href="#">Par Jewelry</a>	North County Inland



[SDVAN.NET](http://SDVAN.NET)

## VENUES LISTED BY LOCATION

### Central San Diego

Adorn Gallery  
Art Expressions Gallery  
Bread on Market  
Colosseum Fine Arts  
Devices Gallery  
Jett Gallery  
Mixture  
Noel-Baza Fine Art  
Taboo  
San Diego Museum of Art, Gift Store

### Central San Diego North and South Park

Cirello Gallery  
Citizen Video  
Planet Rooth  
San Diego Art Department  
Pigment  
Velo Cult

### East San Diego

Fusionglass Co  
Olaf Wieghorst Museum  
Silver Creek Fine Art  
Sophie's Art Gallery  
St. Clair Gallery  
White Sage Gallery

### South San Diego

Bonita Museum

### North County Coastal

#### La Jolla

Contemporary Fine Arts Gallery  
Galeria JAN  
Hallmark Fine Art Gallery  
Madison Gallery

### North County Coastal

Andrews Gallery  
Front Porch Gallery  
Gemological Institute Of America  
Lynne Merchant  
Oceanside Museum of Art, Gift Store  
Ordover Gallery  
Solana Beach City Hall Gallery  
Timmons Galleries  
Trios Gallery  
101 Art and Soul

### North County Inland

Distinction Gallery  
EAP/ Escondido,  
Municipal Gallery  
Fallbrook Art Center  
Par Jewelry



[SDVAN.NET](http://SDVAN.NET)

## Central San Diego

[Adorn Gallery](#)

[Art Expressions Gallery](#)

[Bread on Market](#)

[Colosseum Fine Arts](#)

[Devices Gallery](#)

[Jett Gallery](#)

[Mixture](#)

[Noel-Baza Fine Art](#)

[Taboo](#)

[San Diego Museum of Art Gift Store](#)





[SDVAN.NET](http://SDVAN.NET)

**Adorn Gallery**

#215, 861 6th Avenue  
SD, CA 92101

619-238-1053 [Mirjam Butz-Brown](#)  
[Mapquest](#)

Reception Sat. Aug 22,  
10 am - 3:30 pm  
Closing Reception Sat. Nov 14,  
11am-3pm  
Exhibit: Aug 22 - Nov 14



[Mirjam Butz-Brown](#)

"We are crude, unfinished, individually beautifully fabricated and go through metamorphosis in life where we get refined the closer we draw to God."  
M. Butz-Brown

13



[Angela Conty](#)

"The relationship between the necklace and the *parfum* sculpture is for me the materials, the love to sculpt and carve no matter what outcome. The gems lead me to the creations ..... "  
A. Conty

[Vickie Riggs](#)



"*Breaking the Glass Ceiling* is a tribute to women who are reaching job achievements with 25 steps to the top and its crackle pattern piece of glass. I envisioned a woman making it to the top and then 'kicking off her shoes' after a long hard day!"  
V. Riggs



[Paula Crevoshay](#)

"The butterfly and perfume bottle are studies in different approaches to reaching the spiritual depths and responses to beauty in each of us that are the foundation of art in every culture."  
P. Crevoshay



[SDVAN.NET](http://SDVAN.NET)

**Art Expressions Gallery**

2645 Financial Court, Suite C,  
SD, CA 92117 (near La Jolla)  
858.270.7577 [Patty Smith](#)  
[Mapquest](#)

Reception: Thurs. July 16, 6 - 9 pm  
with Summer Sessions:  
Paintings by [Jeff Yeomans](#)  
Exhibit: July 16 - Sept 12

Viviana Lombrozo



"*Holding On* refers to the bits of everyday experiences that shape us. We have the option of carrying them with us or leaving them behind."  
V. Lombrozo

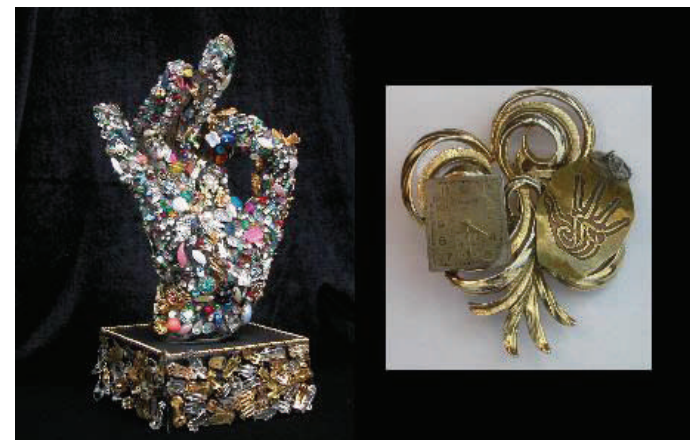
**Bread on Market**

730 Market St, SD CA 92101  
619.795.2730 [Val Grover](#) [Mapquest](#)

Exhibit: July 1 - 31  
No public reception at venue

Thomine Wilson

"..They tell you when to stop and when to go.....giddy up and whoa.....and if that's not enough....I don't know why you say goodbye, I say hello!"  
T. Wilson





[SDVAN.NET](http://SDVAN.NET)

**Colosseum Fine Arts**

2400 Kettner Blvd. Suite F-109,  
SD, CA 92101  
619.795.3704 [Floyd Elmore](#)  
[Mapquest](#)

*The Sculpture and Jewelry Experience*

Reception Fri. July 10, 6 – 9 pm  
with Jay Whaley, Michele Cole  
and Reba Engel at NoLI/Kettner  
Nights and Sat. July 11, 6 - 9pm

Exhibit: July 10 – Sept 3

15



[Susan Berkowitz](#)

"our bodies - as  
vessels, holding  
our hopes,  
dreams, fears"  
S. Berkowitz



[Garry Cohen](#)

"Textiles and glass have been part of culture for  
centuries. My Sarape glass pieces try to emulate the  
feeling of wearable yet brittle art in a colorful fashion."  
G. Cohen



[Deborah Francis](#)

"The jewelry served as a ma-  
quette for the relief sculpture.  
The primary relationship/  
inspiration for the two pieces  
is shape."  
D. Francis.

"Jewelry and Sculpture  
are part of my personal  
story. It is my intention  
to create bold and  
colorful sculptures. I  
love the ability to wear a  
smaller version of sculp-  
ture that I had originally  
made large!"  
C. La Porte

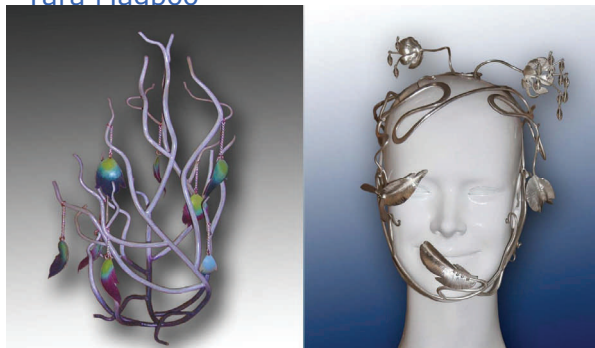


[Cherrie La Porte](#)

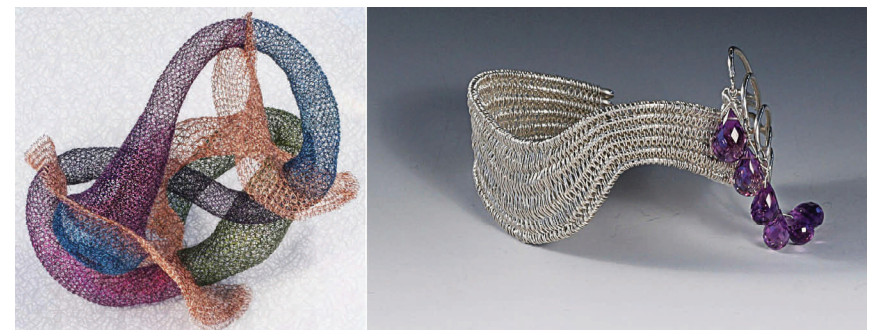


[Kathleen Mitchell](#)

[Tara Magboo](#)



"Both my copper sculpture and silver  
head piece, which are both based on  
plant forms, symbolically represent  
some of the challenges I currently work  
though in my life."  
T. Magboo



[Lisa Van Herik](#)

"...these woven pieces evolved spontaneously, inspired by  
the boldness, freedom and playfulness of Calder's works."  
L. Van Herik



[SDVAN.NET](http://SDVAN.NET)

**Device Gallery**

1815-B Main Street, SD, CA 92113, 619.278.8455 [Amy Brotherton Mapquest](#)

Reception with book launch *Assembled Devices* July 18, 6:30 - 9:30 pm

Exhibit: July 18 - August 29

[Greg Brotherton](#)

**Jett Gallery**

989 W. Kalmia St. SD, CA 92101

619.231.2466 [Kristina Davidov](#)

[Mapquest](#)

Reception Fri. July 10, 6-9 pm at

NoLI/Kettner Nights

Exhibit: July 10 - Aug 10

Zachary Allen

Josh Herman

Britt Neubacher

John Neumann

James Watts

[Michelle Wilson](#)



[Hans Tegebo](#)

[Joey Vaiasuso](#)



“The sculpture [in steel] and pendant [in wood] were created based on the concept of the infinite circle, representing the cyclical nature of existence in different forms.”

J. Vaiasuso





[SDVAN.NET](http://SDVAN.NET)

**Mixture**

2210 Kettner Blvd. SD, CA 92101

619.239.4788 [Merrilee Ekstrom](#)

[Mapquest](#)

Reception Fri. July 10, 6 – 9 pm at NoLI/

Kettner Nights

Exhibit: July 10 -Sept 11

Chris Austin

Robert Verhees

17



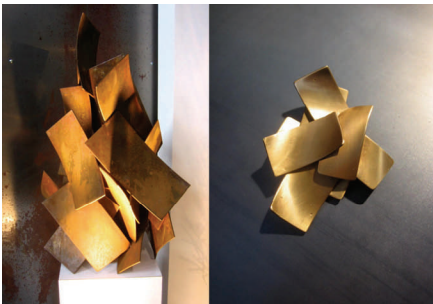
Hugo Heredia Barrera

“What should be heavy seems weightless. What should be brittle seems flexible. What should be fragile seems strong. What should be solid seems liquid.”

H. H. Barrera



[blox](#)



[Matt Devine](#)



[Lea de Wit](#)



Rachel Larraine



[William Leslie](#)



[SDVAN.NET](http://SDVAN.NET)

**Noel-Baza Fine Art**

2165 India Street, SD, CA 92101  
619.876.4160

[Tom Noel](#) and Larry Baza  
[Mapquest](#)

Reception Fri. July 10, 6 -9 pm at  
NoLI/Kettner Nights

Exhibit: July 10 – Aug 10

**San Diego Museum of Art Gift Store**

1450 El Prado, Balboa Park,  
SD CA, 92101  
619.232.7931 [Chacho Herman](#)  
[Mapquest](#)

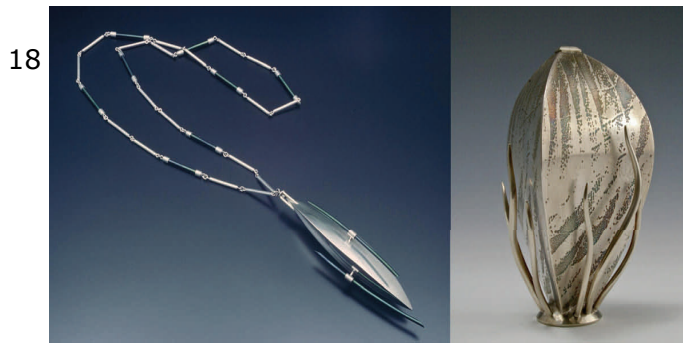
Exhibit: July 25 – Jan 3, 2010  
No public reception at venue

**Taboo**

1615 1/2 W. Lewis, SD, CA 92101  
619.692.0099 [Christina Seebold](#)  
[Mapquest](#)

Exhibit: July 8 – August 8  
No public reception at venue

Anne Wolf



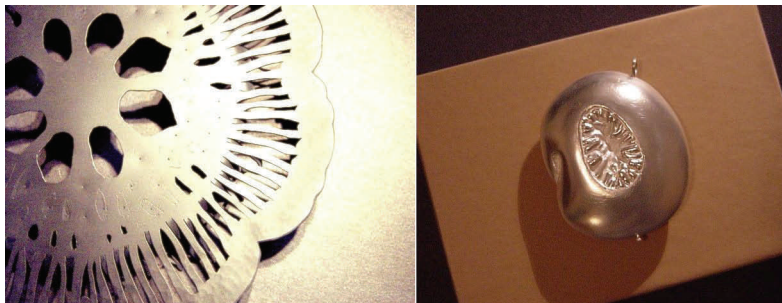
"*The Wind Won't Blow Me Away* - a sterling silver sculpture that references the vessel form; .....and is a three-sided form like *PodNeckpiece*."  
A.Wolf

[Becky Guttin](#)



"The sculptures on my jewelry are as monumental as my large scale pieces."  
B. Guttin

Casey Miller



"Happenings in nature inspire this body of work."  
C. Miller

Ron Boyd



"*New Growth...* pieces are both reflective of one another as seedlings, sprouts and new growth."  
R. Boyd



[SDVAN.NET](http://SDVAN.NET)

# Central San Diego North and South Park

- [Cirello Gallery](#)
- [Citizen Video](#)
- [Planet Rooth](#)
- [San Diego Art Department](#)
- [Pigment](#)
- [Velo Cult](#)





[SDVAN.NET](http://SDVAN.NET)

**Cirello Gallery**

3803 Ray Street, SD, CA 92104  
619. 795. 4850 [Matthew Cirello](#)  
[Mapquest](#)

Sat. July 11, 6 - 11 pm Ray at Night and  
Sat July 18, 6 -10 North Park Nights  
Exhibit: July 1 - July 31

20 "Holding a space for the sacred forms to heal; the Jewelry and Sculpture are one with the ability to transform."  
M. Cirello



[Matthew Cirello](#)



[Taylor Cornejo](#)

"The works presented are symbolic manifestations of the cosmic and elemental forces that inspire, protect, and heal throughout the ages."  
T. Comejo

**Pigment**

3827 30th St, San Diego, CA 92104  
619.501.6318 [Chad Anglin](#)  
[Mapquest](#)

Reception Sat July 18 at North Park  
Nights 7- 9 pm  
Closing Reception Sat August 8 at  
Ray at Night  
Exhibit: July 18 to August 8



[Mary Donald](#)

So often, life is about dancing the fault between contradictions.  
M. Donald

**Planet Rooth**

3811 Ray Street, SD CA 92104  
619.297.9663 [Gustaf Rooth](#)  
[Mapquest](#)

Sat. July 11, 6 - 11 pm Ray at Night and  
Sat July 18, 6 -10 North Park Nights  
Exhibit: July 1 - July 31

Gary Welsh



[Benjamin Lavender](#)

Simplicity and irregularity  
balancing on points of movement .  
B. Lavender



[Anjela Piccard](#) and [Gustaf Rooth](#)



[SDVAN.NET](http://SDVAN.NET)

### San Diego Art Department

3830 Ray Street, SD CA 92104  
619.299.4278 [Andrea Chamberlain](mailto:Andrea.Chamberlain)  
[Mapquest](#)

*Little and Large: Draw It, Build it, Wear it.*  
Reception Sat June 20 at North Park Nights  
7- 9 pm  
Closing Reception Sat July 11 at Ray at  
Night  
Exhibit: June 20 - July 11

Show of student work with instructors  
[Alexis Archibald](#)

### Citizen Video

2207 Fern St, SD, CA 92104  
619.281.3456 [info@citizen-video.com](mailto:info@citizen-video.com)  
[Mapquest](#)

Reception July 25 at  
Southpark Walkabout  
6:30-10:00pm

### Velo Cult

2220 Fern St, SD. CA 92102  
619.819.8569 [Sky Boyer](#)  
[Mapquest](#)

Reception July 25 at  
South Park Summer Walkabout  
6:30-10:00pm

21



[Denise Bonaimo](#)

"These whimsical creations are made from repurposed old game pieces and board games. I get all "warm and fuzzy" because I have wonderful memories of playing these games with my family as a child. "  
D. Bonaimo

I built a pair of conjoined twins inspired by Tim Buton's film Big fish, The little piece is a locket with their images inside, representing them as individuals, but still joined together.  
L. Ivey



[Lindy Ivey](#)

[Richard Keely](#)



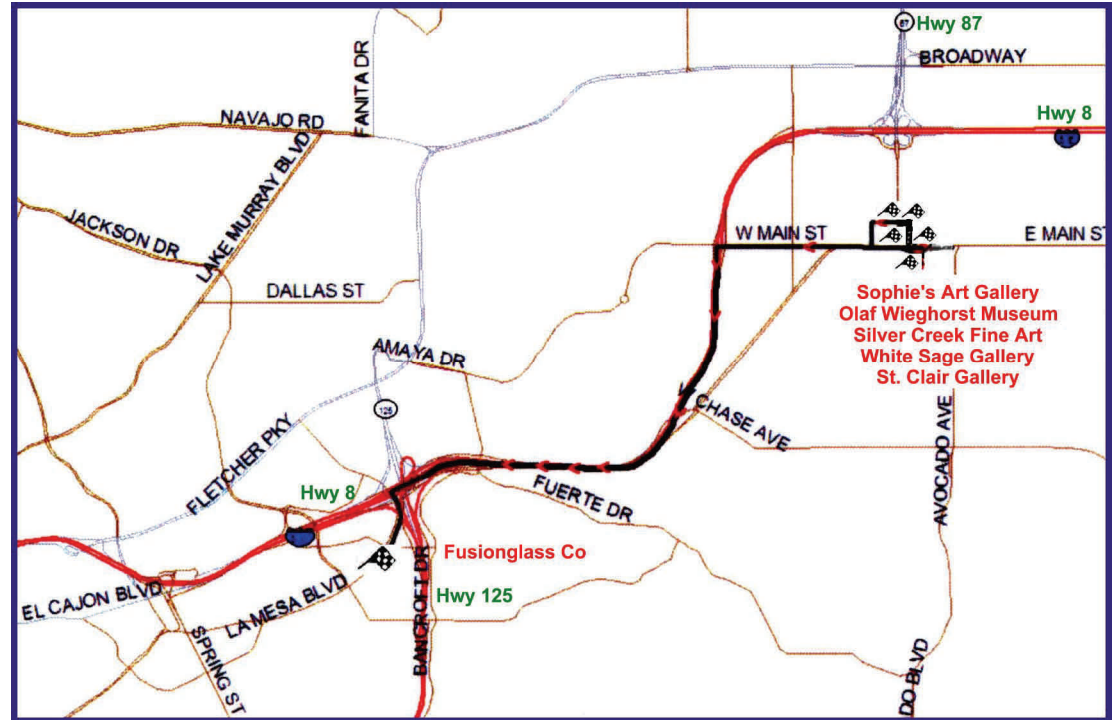
"I'm looking for the fine line between the grand and the vulgar."  
R. Keely



[SDVAN.NET](http://SDVAN.NET)

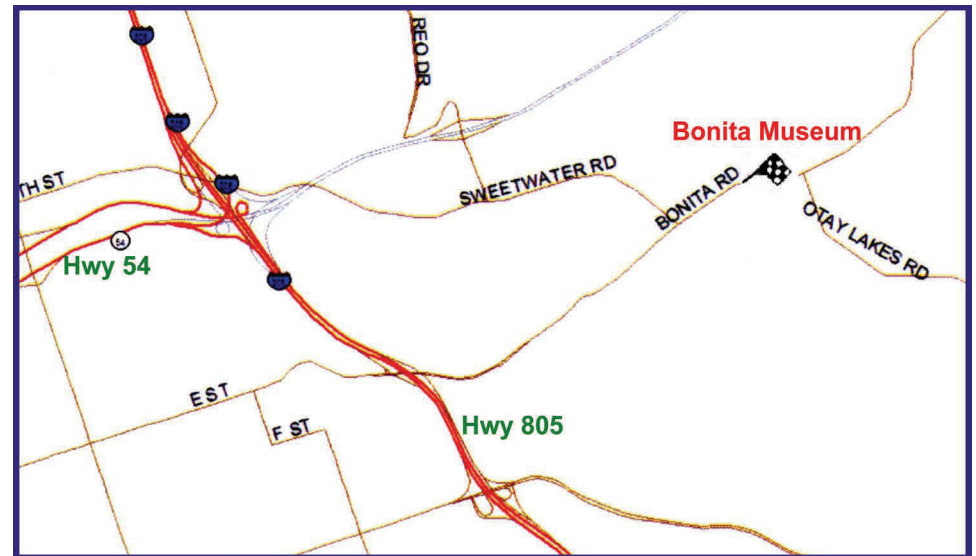
## East San Diego

- [Fusionglass Co](#)
- [Olaf Wieghorst Museum](#)
- [Silver Creek Fine Art](#)
- [Sophie's Art Gallery](#)
- [St. Clair Gallery](#)
- [White Sage Gallery](#)



## South San Diego

- [Bonita Museum](#)





[SDVAN.NET](http://SDVAN.NET)

**Fusionglass Co**

8872 La Mesa Blvd, La Mesa, CA 91942  
619.461.4440 [Kathryn Fernandes](#)  
[Mapquest](#)

Reception Sat. July 11, 6 - 9 pm  
Exhibit: July 1 - July 31

23 "On the Edge of Night ....an interpretation of color, as it transitions from day into night. Color and form relate the pieces."  
P. Fernandes



Paul Fernandes

[Debbie Solan](#)



"When an artist has the urge to express, nothing is sacred. Anything in the vicinity becomes fair game. Resourcefulness is the key to creativity. Alexander Calder has proved that beyond a doubt. I hope my work stands testament to that principle."  
D. Solan

**Olaf Wieghorst Museum**

131 Rea Avenue  
El Cajon, CA. 92020  
619.590.3431 [Judy Moore](#)  
[Mapquest](#)

Reception Sat. July 18, 4-7pm  
as part of  
Alley Cat Summer Fest  
Exhibit: July 1 -31  
Ross Provence



[Sidney Wildesmith](#)

[Elon Ebanks](#)



"Music is a universal language so I have made the necklace for this sculpture from the 5th string and the pick of my own guitar."  
E. Ebanks



[SDVAN.NET](http://SDVAN.NET)

**Silver Creek Fine Art**

120 E. Main St. El Cajon, CA 92020  
619.447.3535 [Lynn Endicott](#)  
[Mapquest](#)

Reception Sat. July 18, 5:30 – 7:30  
as part of Alley Cat Summer Fest  
Exhibit: July 1 - 31

24



[Carlos Castrejón](#)

“This is a sculpture that digs into the different human behavior; how do the facial expressions change with any situation during 24 hours of the day. The jewelry is representing chunks of time taken to form a physical idea of internal interaction between our senses.”  
C. Castrejón

[Jim Kermott](#)



“Mystery of scent meets the cleverness of survival. This game is played with the absence of rules.”  
J. Kermott

Cyndy Fought

**Sophie’s Art Gallery**

109 Rea Ave, El Cajon, CA 92020  
619.593.2205 [Debra Turner Emerson](#)  
[Mapquest](#)

Reception Sat. July 18, 5:30 – 8 pm as  
part of Alley Cat Summer Fest  
Exhibit: July 1 - 31  
Courtney Bell  
Kristin Hansen  
Jan Hulet  
Jackie Leong  
Charlie Lizarrga  
Michael Lorenz  
Marcus Margerum  
Theresa Moons  
Angela Neal  
Rudy Salgato



“Whimsy in Wire...The necklace and sculpture are related in terms of their spirit and in the use of the materials, which were chosen from those that were on hand from the jewelry classes.”  
C. Fought



Wendy Morris





[SDVAN.NET](http://SDVAN.NET)

**St. Clair Gallery**

270 East Douglas Avenue  
El Cajon, CA 92020  
619.401.4000 [Howard Bagley](#)  
[Mapquest](#)

Reception Sat. July 18, 4 – 8 pm  
as part of Alley Cat Summer Fest  
Exhibit: July 1 - 24

[Jill Streed](#)



[Joann Sandlin](#)

"I have focused on art using African images ever since our trip to Africa eight years ago. Almost all of my paintings, hanging sculptures and much of my jewelry reflect African themes."  
J. Sandlin



[Jane Darin](#)

"I love Calder's whimsy and when I did my figure of Georgia O'Keeffe for the White House Christmas tree I made a copy for the figure of a Calder copper jewelry piece Georgia always wore."  
J. Darin

**White Sage Gallery**

132 E. Main St, El Cajon, CA. 92020  
619.596.7688 [Diane Keltner](#)  
[Mapquest](#)

Reception Sat. July 18, 5:30 -7:30pm  
as part of Alley Cat Summer Fest  
Exhibit: July 1 - 31



[Diane Keltner](#)

"Indian Folklore suggests a higher power and love of The Hunt, resides in the *High Mountain Hunter*. *The Cougar Idol* empowers The Female Hunter, the courage to pursue the love of the hunt."  
D. Keltner



[SDVAN.NET](http://SDVAN.NET)

**Bonita Museum**

4355 Bonita Road,  
Bonita, CA 91902  
619.267.5141 [Vicky DeLong](#)  
[Mapquest](#)

Reception: Sat, June 20, 4 - 6 pm.  
Exhibit: June 20 - July 31

Denise Bonaimo



"These whimsical creations are made from repurposed old game pieces and board games. I get all "warm and fuzzy" because I have wonderful memories of playing these games with my family as a child. "  
D. Bonaimo

Susan Osborn

26



"Both works are made from found and recycled objects. They're intend to invoke a sense of an old relic. Parts and pieces generate questions like: what was this used for?"  
S. Osborn



Jeffrey Steorts

"This small heart represents the divine mechanism of the soul which is omnipresent, omniscient and omnipotent. The cross decorated with watch pieces and compasses symbolizes the intersection of spirit and matter, time and space."  
J. Steorts

"...I particularly love Victorian. My wife and I also love and collect religious art. The painting in the frame is a miniaturized giclée of one of her larger pieces."  
L. Steorts

Larry Steorts





[SDVAN.NET](http://SDVAN.NET)

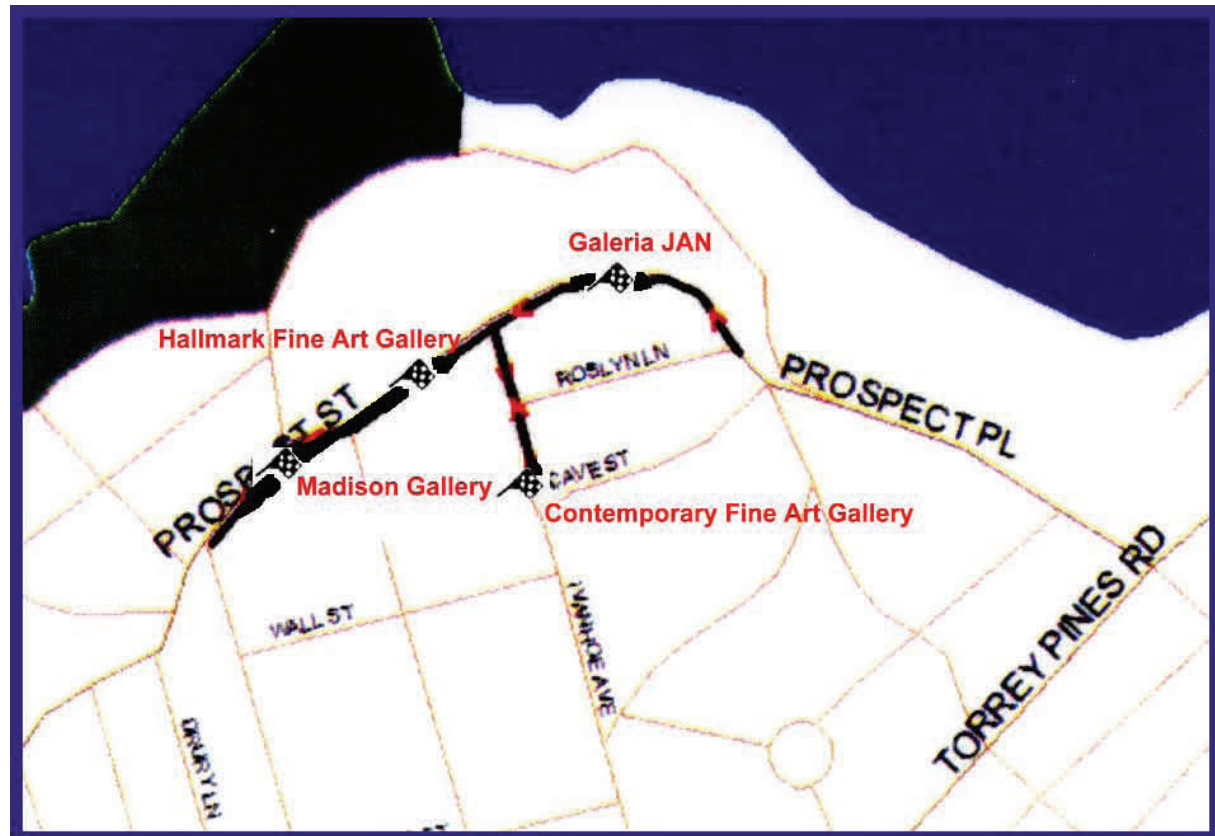
## North County Coastal La Jolla

[Contemporary Fine Arts Gallery](#)

[Galeria JAN](#)

[Hallmark Fine Art Gallery](#)

[Madison Gallery](#)





[SDVAN.NET](http://SDVAN.NET)

**Contemporary Fine Arts Gallery**

7946 Ivanhoe Avenue,  
La Jolla, CA 92037  
858.551.2010 [Suzanne King](#)  
[Mapquest](#)

*Little & Large at Contemporary Fine Art Gallery*

Reception Fri. July 3, 6 -9 pm as part of  
La Jolla First Friday Art Walk  
Exhibit: July 3 - Dec 31

28 "Glass, stainless steel, copper and aluminum are to my wall sculptures what diamonds and precious metals are to jewelry." C. French



[Craig French](#)

[Alexandra Hart](#)



"The larger piece contemplates the corset as sculpting the female body, alluding to Cnidarian forms. The smaller piece considers the Swedish bridal crown as an extinct form of culture, alluding to the form of extinct Sea Lily"  
A. Hart



[Susan Hirsch](#)

"...Trinity incorporates three slim columns that embrace the unity between glass and steel. This combination invites distinct emotional expressions..."  
S. Hirsch

"The bird sitting precariously on random shapes, the soft form that still somehow has some angles to it, and the movement of something swaying in the wind. These pieces reflect a sharks tooth, boat mast, and an unexplained shadow."  
L.S. Mandel



[Lisa Slovis Mandel](#)

[Les Perhacs](#)



"Looking at nature's building blocks, you discover that many of the forms are geometric; chaos is the environment in which they exist."  
L. Perhacs



"By extracting the essence of those forms, I am able to translate the movement, power and grace of the ocean into metal."  
C. Perez-Garcia

[Corrine Perez-Garcia](#)

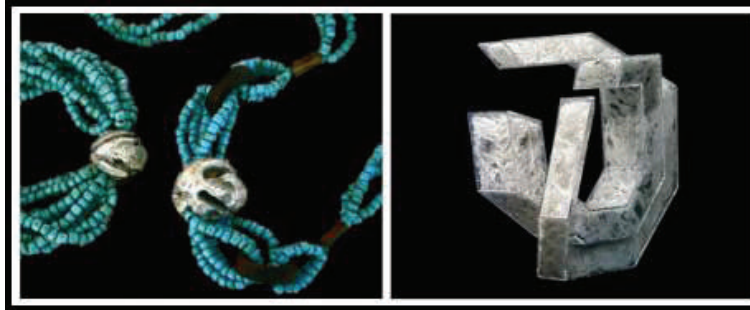


[SDVAN.NET](http://SDVAN.NET)

**Galeria JAN**

1250 Prospect St. B21  
La Jolla, CA 92037  
858.551.2053 [Biljana Beran](#)  
[Mapquest](#)

Reception Fri. July 3, 6 -9 pm as  
part of La Jolla First Friday Art Walk  
Exhibit: July 3 – Aug 3



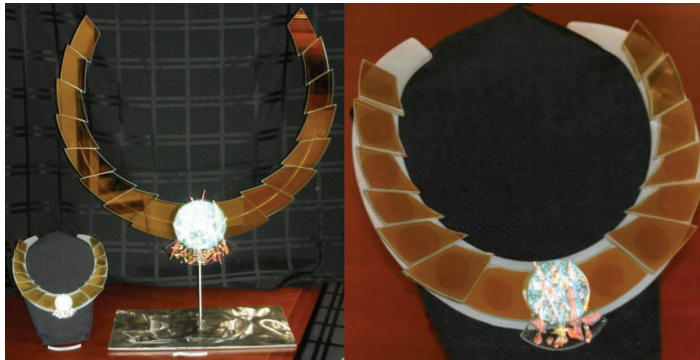
“The sculptures on my jewelry  
are as monumental as my large  
scale pieces. ”  
B. Guttin

[Becky Guttin](#)

**Hallmark Fine Art Gallery**

1162 Prospect Street  
La Jolla CA 92037  
858.551.8108 [Michele Mitchell](#)  
[Mapquest](#)

Reception Fri. July 3, 6 - 9 pm as  
part of La Jolla First Friday Art Walk  
Exhibit :July 3 – Dec 31



[Tom Marosz](#)

**Madison Gallery**

1020 Prospect Street, Suite 130,  
La Jolla, CA 92037  
858.459.0836 [Alex Salazar/Lorna](#)  
[York](#) [Mapquest](#)

Reception Fri. July 3, 6 -9 pm as part  
of La Jolla First Friday Art Walk  
Exhibit: July 18 - August 18



“One face is good the other could be  
evil. One face is virtue the other could  
be depravity. Darkness fading out from  
head to toe.”  
C. Guerra

[Carolyn Guerra](#)

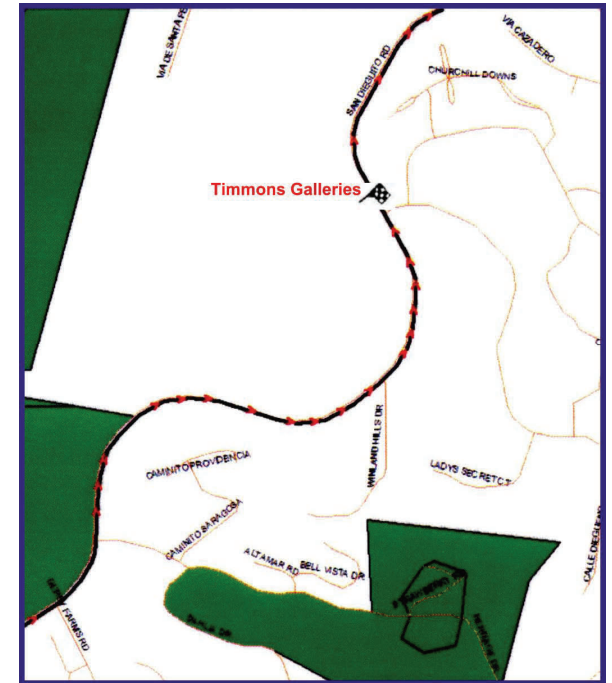
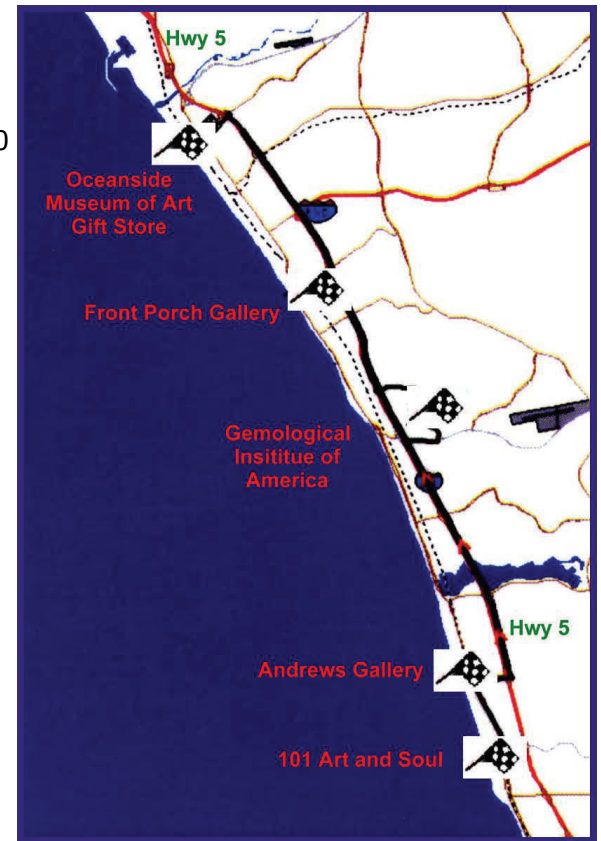


SDVAN.NET

# North County Coastal

- [Andrews Gallery](#)
- [Front Porch Gallery](#)
- [Gemological Institute Of America](#)
- [Lynne Merchant](#)
- [Oceanside Museum of Art, Gift Store](#)
- [Ordover Gallery](#)
- [Solana Beach City Hall Gallery](#)
- [Timmons Galleries](#)
- [Trios Gallery](#)
- [101 Art and Soul](#)

30





[SDVAN.NET](http://SDVAN.NET)

**Andrews Gallery**

1002 North Coast Highway 101  
Encinitas, CA 92024  
760.230.2680 [Drew Synder](#)  
[Mapquest](#)

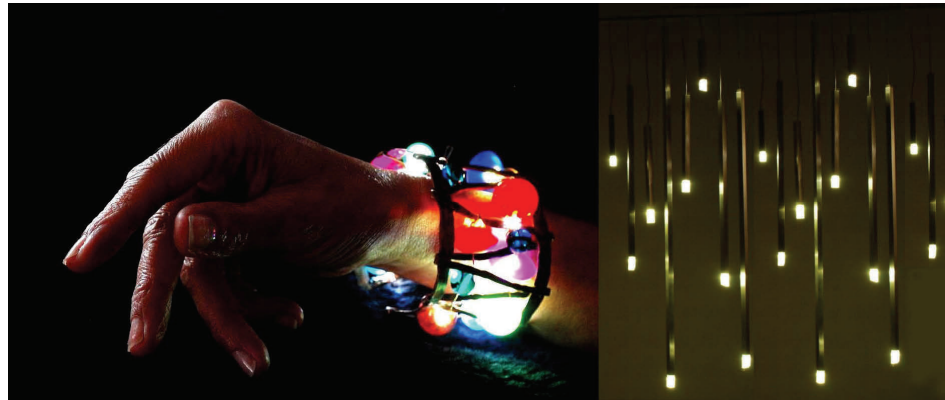
Reception, Sat. July 18 from 7 pm  
Exhibit: June 26th - July 31st

**Front Porch Gallery**

2903 Carlsbad Blvd.,  
Carlsbad, CA 92008  
760.795.6120 [Steve Nossan](#)  
[Mapquest](#)

*Art Pairings: Lia Strell & Renata Spiazzi*  
Reception Sat. July 18 noon to 3  
Exhibit: July 18 - Sept 6

31 "These works echo the wit and whimsy that Calder brought to his jewelry, contrasting bronze-age techniques with 21st century technology."  
S. Rosenberg



[Sander Rosenberg](#)

[Lia Strell](#)

"The relationship of little is a personal energy... Hold your love close which then connects large to a Universal energy....Let it out and share it."  
L. Strell





[SDVAN.NET](http://SDVAN.NET)

**Gemological Institute  
Of America**

The Robert Mouawad Campus  
5345 Armada Drive.  
Carlsbad, CA 92008  
760.603.4116 [Larne Antrim  
Mapquest](#)

Exhibit: July 10 - Jan 3, 2010  
All tours must be scheduled in  
advance as visiting is by  
appointment only.  
No public reception at venue

"As we are arrested more by the  
beauty of the octopus than by its  
remarkable perceptual capacities, so

we are impressed more by the elegantly curved legs of the tripod tray-table  
than by its many functions."

A. Hart

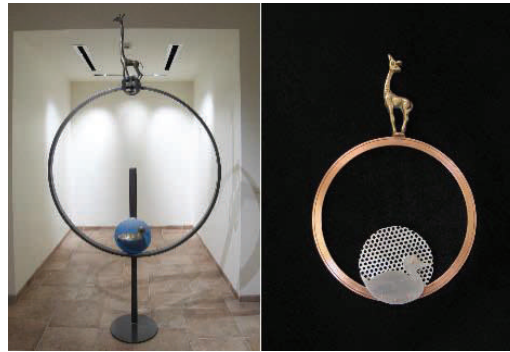
Wendell Perry



"Two dimensional planes, cut and bent into  
shapes, with stones piercing (or being  
pierced by) those planes, provide some of  
the design vocabulary used in both the  
jewelry and sculpture."

W.Perry

32



Neal Bociek

"Re-evolution" is  
kinetic..... made with  
fabricated parts and found  
objects....that have been  
placed into the metal com-  
position to suggest a  
constant change of events  
for all living creatures."

N. Bociek

"The sculpture shows the  
shelter and surrender I feel  
through God. The "Lovely  
Eye" shows him unjudgingly  
watching us as we struggle,  
disobeying..."

M. Butz-Brown



[Mirjam Butz-Brown](#)



[Alexandra Hart](#) photo: Adam Bujnowski

"...seven colors representing the  
colors of the Chakra, the Rain-  
bow, Life. We all have our own  
journey, we all search using the  
maps that have meaning to us.

Both pieces are kinetic."  
V. Riggs

[Corrine Perez-Garcia](#)



[Vicki Riggs](#)





[SDVAN.NET](http://SDVAN.NET)

**Lynne Merchant**

142 South Cedros Ave.  
Solana Beach, CA 92075  
858.755.1638 [Lynne Merchant](#)  
[Mapquest](#)

*Touched by Calder: Little & Large*  
Reception Fri. July 24, 6:30 - 9pm  
Cedros Third Thurs.  
July 16, 5 - 8pm  
Exhibit: July 11 - Sept 29

33



[Irene de Watteville](#)

"Eyes on the breasts of my seated sculpture enticed me to make a jewel made with face parts, the ears are brooches that carry a pendant celebrating a pair of tasting lips."  
I. de Watteville

"My *Humaniquin* sculpture, from the series *Wabi-Sabi*, evolved from a very old fence and is adorned with the vegetation nearby. The *Humaniquin* and related jewelry energize each other and move in space."

L. Merchant



[Lynne Merchant](#)

**Oceanside Museum of Art, Gift Store**

704 Pier View Way  
Oceanside CA 92054  
760.435.3720 [Beth Smith](#)  
[Mapquest](#)

No public reception at venue  
Exhibit :July 1 - July 31

[James Hubbell](#)

"Perhaps when I think of working in iron, my mind goes to the wind and to the sea. Smoke drifting up from a candle. Iron asks the artist to be its partner."  
J. Hubbell



"My weaving has inspired my jewelry..... Both the natural materials and metals are similar. The presence of nature connects both the large sculptures and small jewelry pieces."  
P.J. Giacchina

[Polly Jacobs Giacchina](#)





[SDVAN.NET](http://SDVAN.NET)

**Ordover Gallery**

410 S. Cedros Ave,  
Solana Beach, CA 92075  
858 720 1121 [Abe Ordover](#)  
[Mapquest](#)

Reception Sat July 25, 6 – 8:30 pm with  
*Contemporary Masters of Fine Art Photography*  
Reception: Cedros Third Thurs. July 16, 5 - 8 pm  
Exhibit: July 23- Oct 11

**Solana Beach City Hall Gallery**

635 South Highway 101  
Solana Beach, CA 92075  
858.720.2454 [Anita Edman](#)  
[Mapquest](#)

Reception Fri. July 31, 5:30 – 8 pm.  
Exhibit: July 1 - August 15

“What *The Winning Yacht* sculpture and my sail bracelet have in common is that they take you to the sea without having to be there.”  
E. Ebanks

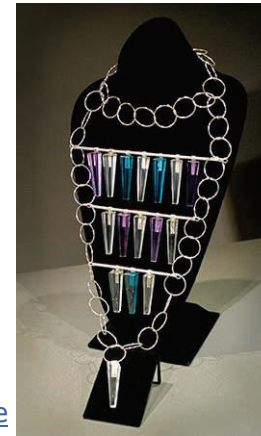
“As delicacy meets the wearer, sculptural intricacy finds its natural gravity.”  
A. A. Childs



[Elon Ebanks](#)

In addition to sharing color and shape the jewelry piece is composed of African trading beads reminiscent of African native jewelry while the sculptures call to mind the texture and shape of African native huts and termite mounds.

C. B. Rodriguez



[Dick Ditore](#)



[Ashley Agadez Childs](#)



[Carol Beth Rodriguez](#)



[SDVAN.NET](http://SDVAN.NET)

**Trios Gallery**

404 North Cedros Avenue,  
Solana Beach, CA 92075

858.793.6040 [Sheri Fox](#)

[Mapquest](#)

Reception Sat. July 11th, 5 – 8 pm

Exhibit: July 11 - August 15

35

Linda Da Pra



"The necklace and leaves enveloping Fern, a forest nymph, were inspired by the beloved memory of an autumn day in New York State's farming country."

L. Da Pra

[d. goth](#)



"These are ceramic hearts that carry on the theme of mended heart, albeit they were mended with some difficulty, nails, screw, wire and staples."

d. goth

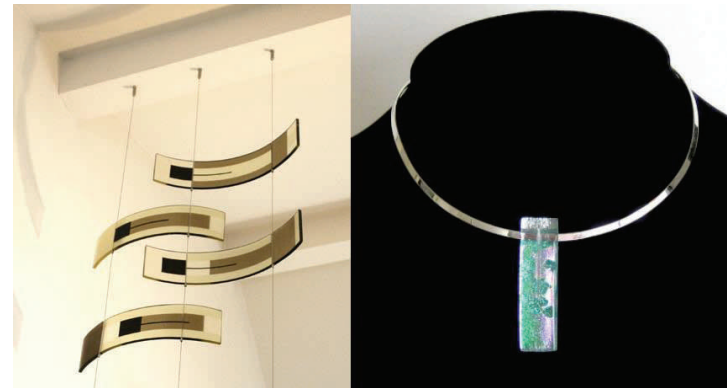
Johanna Hansen



"My *Little and Large* are both inspired by Alexander's *Circus*: his use of imagination, whimsy, and non-precious materials to create wonder. "

J. Hansen

[Susan Hirsch](#)



"My sculpture suspension series enables the glass curves to be free of traditional boundaries of walls or surfaces..... The pendants mirror the curves of the suspension and float on a sterling omega."

S. Hirsch



[SDVAN.NET](http://SDVAN.NET)

**Timmons Galleries**

16089 San Dieguito Rd. Suite H-102

Rancho Santa Fe, CA 92091

858-756-8488 [Leigh Timmons](#)

[Mapquest](#)

Reception TBD

Exhibit: July 11 - August 15

36



[Debbie Solan](#)

"When an artist has the urge to express, nothing is sacred. Anything in the vicinity becomes fair game. Resourcefulness is the key to creativity. Alexander Calder has proved that beyond a doubt. I hope my work stands testament to that principle."

D. Solan

**101 Art and Soul**

633 S. Coast Hwy 101

Encinitas, CA 92024

858.442.8666 [Cindy Blunkin](#)

[Mapquest](#)

Reception June 28, 2-6 pm with

[Miriam Jewels](#) benefit for [Promises 2 kids](#)

Exhibit: June 28 – Dec 31

**Mireille des Rosiers**



"Bypassing the sweat of brothers buried in mines, my pieces revisit recycled material in a desire to express beauty and creativity while minimizing the impact on earth."

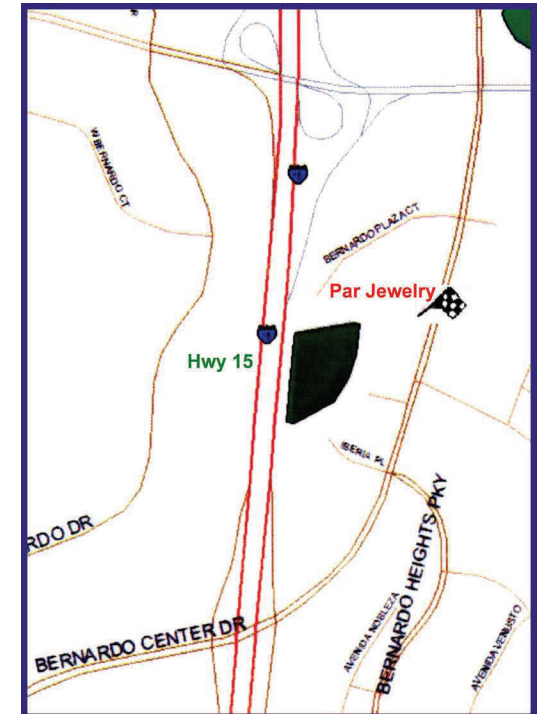
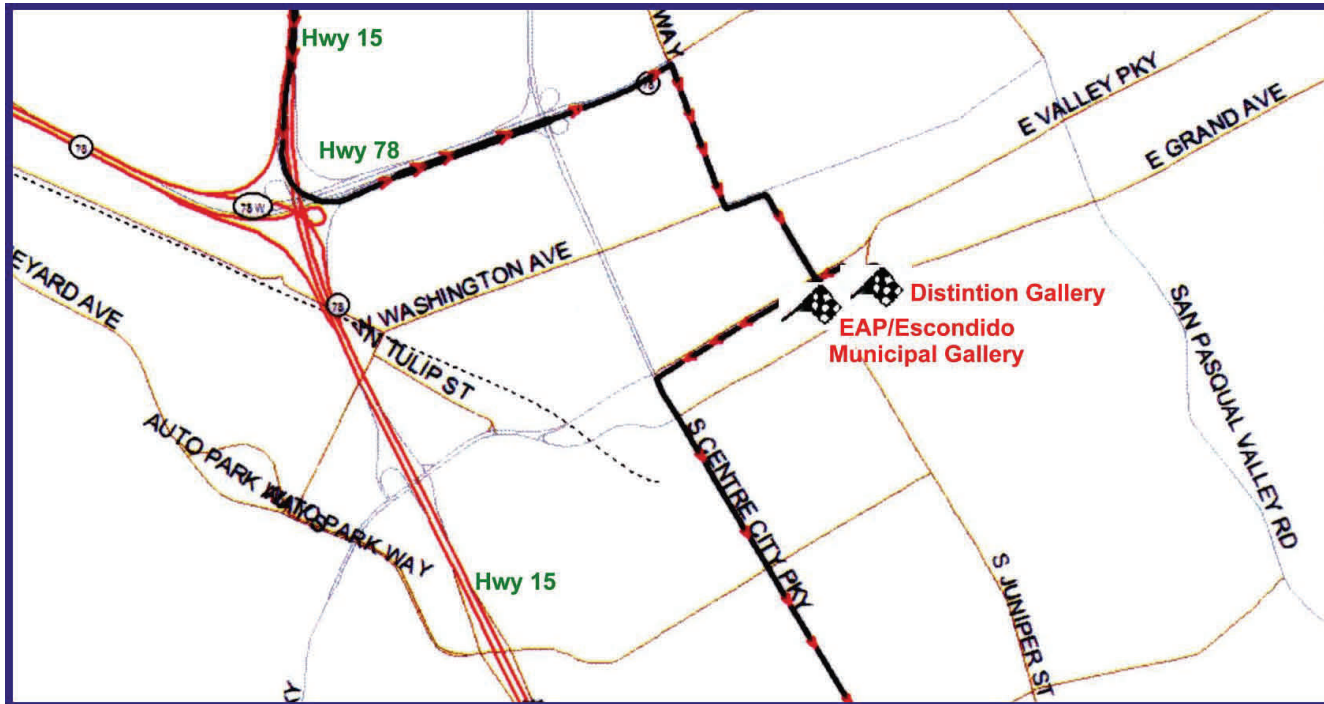
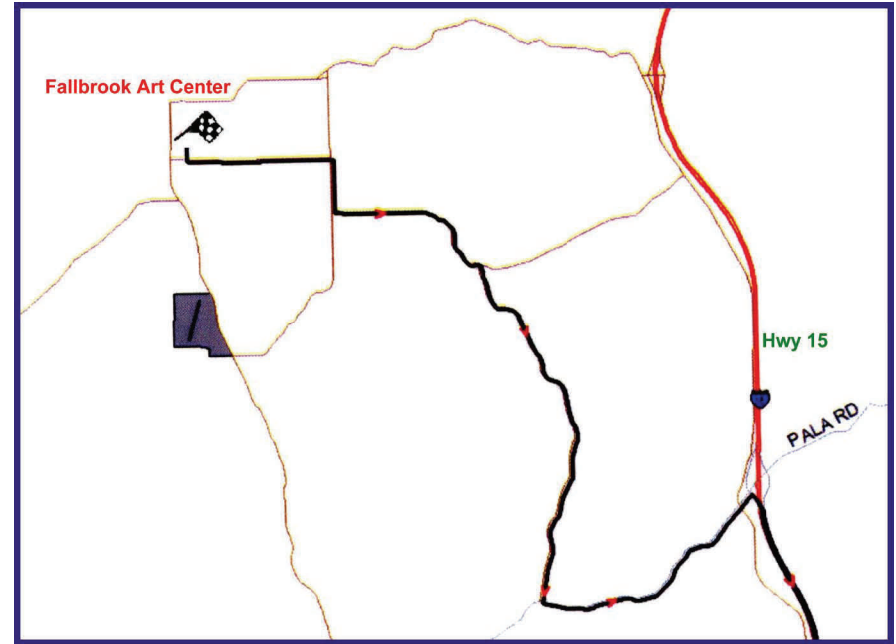
M. des Rosiers



[SDVAN.NET](http://SDVAN.NET)

# North County Inland

- [Distinction Gallery](#)
- [EAP/ Escondido Municipal Gallery](#)
- [Fallbrook Art Center](#)
- [Par Jewelry](#)





[SDVAN.NET](http://SDVAN.NET)

Catherine Lanzl

**Distinction Gallery**

317 East Grand Ave,  
Escondido, CA 92025  
760.781.5779 [Melissa Inez Walker](#)  
[Mapquest](#)

Reception Sat. July 11 to 6 -11pm  
Exhibit: July 11-Aug 8



Denise Bledsoe

"I am inspired by the anomalies and unusual designs in nature to create my work. *Obscurum Elucido*, Latin for "darkness to light", aptly describes my creative direction."  
C. Lanzl

**EAP/ Escondido Municipal Gallery**

262 East Grand Avenue  
Escondido, CA 92025  
760.480.4101 [Wendy Wilson](#)  
[Mapquest](#)

Reception 2nd Sat. July 11th, 5:30 - 8:30pm  
Exhibit: July 10 - August 14,



Linda Shaffer

"These pieces capture the human curiosity for star glazing as we contemplate our eternal connection to the universe."  
L. Shaffer

[Elizabeth Huller Eisemann](#)



"I am fond of repeated shapes and that's easy to come by in a button."  
E. Huller Eisemann



[SDVAN.NET](http://SDVAN.NET)

**Fallbrook Art Center**

103 South Main  
Fallbrook, CA 92028  
760.728.1414 [Mary Perhacs](#)  
[Mapquest](#)

Reception Sat July 11, 5 - 7pm  
with the 12th Annual Galaxy of  
Glass Opening Night  
Exhibit: July 12 - Aug 16



Marlene Rantanen

"I don't view skeletons as death, but as structures of life. *Sleeping Owl* explores the planes, curves and edges outside while the necklace examines the support system inside."  
L. Perhacs



[Les Perhacs](#)

"The sculpture and jewelry relate in overall concept/theme; in use of materials, metals, glass and in the details. Similar design elements were used in both pieces although at a different scale."  
M. Rantanen

[Kamyar Zarrabi](#)



"Taking great pride in using local San Diego gem stones to creative one of a kind works is my passion and my pride"  
K. Zarrabi

**[Par Jewelry](#)**

16777 Bernardo Center Drive  
SD, CA 92128  
858.485.0450 [Kamyar Zarrabi](#)  
[Mapquest](#)

Reception Sat July 11, 3 - 5 pm  
Exhibit: July 1 - Sept 1

"The sculpture presents the flow of pleasant movement while the pendant finds the dance of beauty in its footprint."  
Mingo and Asho



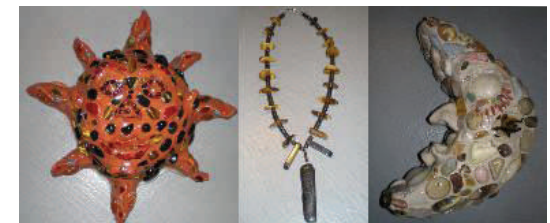
[Mingo and Asho](#)



Wendell Perry

"My sculptural work often combines stones (generally in their natural state), with bronze and other materials. They also make references to ancient cultures and to their world views."  
W. Perry

"When I was a child my great grandfather told me that the large onyx stone (on the necklace) is an Indians tear that is why I made the sun out of the adobe Indian clay. All geological material on our planet has a relation to and was created by stars like our sun...."  
Fresh Ginga



[Fresh Ginga](#)



[SDVAN.NET](http://SDVAN.NET)

**The 41 venues and more than 90 artists** worked ceaselessly to create and display artwork for this promotion. Their efforts are invaluable.

The Little & Large committee is composed of the following who are giving of their times as volunteers to make this project successful: Ranee Alano, [Denise Bonaimo](#), Kay Colvin, [Mireille des Rosiers](#), [Lea Dennis](#), [Deborah Francis](#), [Patricia Frischer](#), [Susan Hirsch](#), [Georgia Hoopes](#), [Rosemary KimBal](#), [Alexandra Rosa](#), [Diane Sanchez](#), [Darwin Slindee](#), [Philly Joe Swendoza](#), [Lisa Van Herik](#), [Kaarin Vaughn](#), and [Thomine Wilson](#). Special thanks to [Tom Wilson](#) who supplied our Little & Large decals, to [Trios Gallery](#) for the SDVAN flyer design, and to [Susan Hirsch](#) for our invite design.

We are grateful for the generous support from the [Sè Hotel](#) and Anissa Manfredi who hosted the launch party for the entire promotion at their lovely Siren lounge and for Eco-friendly cocktails courtesy of [VeeV](#). Volunteers for the launch party at the Se Hotel include all those above plus: [Lisa Roche](#), [Jeffrey R. Brosbe](#), [Danielle Sussalla](#), and the photographers [Tim Fagan](#), [Marcel T. Cabrera Jr](#) and [Bruce Meyer](#). Ranee Alano and James Flores perform our salsa demonstration. The [Flipbooks](#) were supplied and manned by Sharlie Walker. Philly Joe Swendoza dazzles us as Master of Ceremonies. Thanks to the models for our runway show Lorra Alcantara, Alina Selyanina, Jackie Lynn Carreon, Jacquelyne Crockett, Armi Guzman, Lorelei Joy Hulsey, Melody Ward as well as the committee members, [Mireille des Rosiers](#), [Alexandra Rosa](#), [Kaarin Vaughn](#), and [Thomine Wilson](#). We are proud to have hair arranged by [Sweet Salon Haircare](#) and Michelle Holper and make up applied by [Floreden Soliman](#) *A Touch of Flo*.



[41 Little & Large shows](#) county wide. More than [90 artists](#)  
Watch for [Little & Large](#) near you from June to Dec, 2009  
**More info:** [info@sdvisualarts.net](mailto:info@sdvisualarts.net) **760.943.0148** [www.SDVAN.net](http://www.SDVAN.net)





[SDVAN.NET](http://SDVAN.NET)

**San Diego Visual Art Network** has a mission to improve the clarity, accuracy and sophistication of discourse about San Diego's artistic and cultural life. We are dedicated to reinforcing the idea that the visual arts are a necessary and vital part of the health of our city. By providing a directory and events calendar and facilitating collaborations we hope to not only build the confidence of those involved in the arts, but disseminate information throughout San Diego thus raising the bar on the writing, production and appreciation of the visual arts in our region. SDVAN funds the [SD Art Prize](#) and [SmART Collector](#), [RAW](#), [Picked RAW](#) and [Picked RAW Peeled](#) features as well as exhibition projects like [Movers and Shakers](#) and [Little & Large](#).

Thank you for supporting these artists and galleries by purchasing works of art. A suggested 5% donation will come to the San Diego Visual Arts Network for every sale. This and your generous donations help us finance our ongoing projects in support of the Visual Arts Community of San Diego.

SDVAN is a non-profit public charity 501 C 3 number EIN #20-5910283 and a 100% volunteer organization.  
2487 Montgomery Avenue, Cardiff by the Sea, CA 92007  
[www.SDVisualArts.net](http://www.SDVisualArts.net) 760.943.0148 [info@sdvisualarts.net](mailto:info@sdvisualarts.net)

"With the creation of sculpture, I found freedom from the limitations of scale and wearability. For the first time, I could concentrate solely on the sinuous forms, their movement, and the tensions produced. .... The evolution that resulted is a pair of graceful, sensual sculptures that stayed true to the distinctive style that I am known for in my jewelry. This experience has been a wonderful learning process and a challenging, but fascinating, artistic journey. I am grateful for the opportunity to participate in this event!"

C. Perez-Garcia